



 **Lyman Allyn**  
ART MUSEUM  
Celebrating the power of art since 1932

# PRE-VISIT GUIDE FOR EDUCATORS

625 Williams Street | New London, CT 06320 | 860.443.2545 | [lymanallyn.org](http://lymanallyn.org)

**Dear Educator,**

This packet is designed to introduce you to the Lyman Allyn Art Museum prior to your group visit. We find that visitors are better able to engage with and benefit from their visit with prior preparation. Our goal for group tours is to spark curiosity and excitement! Our hope is that participants continue visiting the Lyman Allyn in the future, as well as other museums.

We look forward to welcoming your group and being a part of their art education.

Sincerely,  
The Learning & Engagement Team



**Eileen Donovan**  
Director of Learning & Engagement  
*donovan@lymnallyn.org*  
860.443.2545 ext. 2128



**Sophia Gipstein Scirico**  
Learning & Engagement Coordinator  
*gipstein@lymnallyn.org*  
860.443.2545 ext. 2110

---

**TABLE OF CONTENTS**

Schedule a Visit	2
What to Expect, Museum Etiquette & Tips	3-5
Group Visitor Policies	6-7
About the Museum & Exhibitions	8-10
Resources	11-12

## REGISTER FOR YOUR VISIT

- Advanced registration is required for all group tours and programs.
- Group reservations require a minimum of 8 people.
- Groups larger than 60 will be scheduled over multiple time slots or days.
- Tentative dates must be confirmed within 5 business days of initial contact. Afterwards, unconfirmed dates can be offered to other groups.

To request a group visit please complete the form found on [lymanallyn.org](http://lymanallyn.org) or email Sophia Gipstein Scirico at [gipstein@lymanally.org](mailto:gipstein@lymanally.org) to begin the process. We suggest requesting a tour at least three weeks in advance.

## GROUP VISIT OPTIONS

### Self-Guided Tour:

Time is self-determined

Available Tuesday – Saturday 10 am – 4 pm

This option allows groups to tour the Museum at their own pace and with their own itinerary. We ask all groups of 10 or more selecting this option to complete the tour request form OR check in with Sophia Gipstein Scirico at [gipstein@lymanally.org](mailto:gipstein@lymanally.org) to ensure there are no conflicts on the date of interest.

### Guided Tour:

One-hour

Available Tuesday – Friday, 9:30 am - 4 pm

This field trip, which is customized to meet K-12 curriculum standards and interest visitors of all ages, includes a welcome to the Museum and an hour-long guided tour of the permanent collection or special exhibition of your choice. Five teachers/chaperones are free of charge with the group.

### Guided Tour & Artmaking Activity:

Two-hour program

Available Tuesday – Friday, 9:30 am - 3 pm

This field trip, which is customized to meet K-12 curriculum standards, includes a welcome to the Museum, an hour-long guided tour of an exhibition of your choice and an hour-long hands-on art class (each student leaves with their own finished work of art) in the Museum's studio. Five teachers/chaperones are free of charge with the group. Art project options include:

- Acrylic painting on canvas board (may be done indoors or outdoors, weather permitting)
- Printmaking
- Sculpting with clay and/or wire
- Let us customize a project to complement your classroom studies.

### Guided Tour & Writing Project:

Two-hour program

Available Tuesday – Friday, 9:30 am - 3 pm

This field trip, which is customized to meet K-12 curriculum standards, includes a welcome to the Museum, an hour-long guided tour of an exhibition of your choice and an hour-long writing project. Students will learn how to write about art and then try their hand at composing an essay, short story or poem about a work of art in the galleries. Five teachers/chaperones are free of charge with the group.





## WHAT TO EXPECT

An experienced docent will lead your tour. Docents are knowledgeable, friendly and enthusiastic guides that act as a link between the Museum and its visitors. They receive training that will enable them to engage visitors of all ages. They make visiting the Museum a stimulating and memorable experience. Museum staff lead the art projects and writing projects inside of the Museum's large art studio.

## MUSEUM ETIQUETTE AND TIPS

Group leaders, please review these expectations with your students and chaperones. We will review them as a group upon arrival, however, prior review is always helpful.

## MUSEUM ETIQUETTE

Museums are fragile environments and school groups bring in a large number of people visiting at one time. Following our Museum behavior expectations is essential to the success and enjoyment of the learning experience. We reserve the right to ask a school group to leave the Museum due to behavior issues.

- Please no food, drink, or gum in Museum galleries.
- For the safety of the objects, visitors should leave backpacks and other large bags in the Museum lobby. Bags with necessary medical supplies can be carried by an adult.
- Appropriate Museum behavior is necessary to avoid bumping into or damaging artifacts. Running, pushing, and roughhousing are not allowed in the Museum.
- Please keep a safe distance between you and the objects. This helps to avoid accidentally touching or bumping artifacts.
- Please do not touch artwork. Your touch may not seem like much, but even the slightest contact can damage the surface of objects, rust metal, or leave fingerprints.
- Please use indoor voices in the Museum. We want to respect other groups or visitors.
- Writing and sketching with pencils is permitted in the Museum. If an accident should occur, a pencil mark is easier to remove than a pen or marker. Please avoid pointing at objects while holding a pencil or other items in your hand.
- Please do not lean on walls or cases (either to write or for physical support). This helps keep pictures on the walls and objects secure in their display case. Please feel free to sit on the benches or on the floor as you talk, write, or draw.
- Groups should stay together when moving through the Museum. This is for teachers, chaperones, and students. All children groups must always have adult supervision and we encourage adult participation during field trips.
- Limit cell phone usage during programming.



## TIPS FOR YOUR TRIP

- Please arrive on time. There may be another tour or program scheduled to take place before or after your group's tour. If you are running late for a tour, please contact the Museum at 860.443.2545.
- We highly recommend that students wear nametags. It makes engagement from staff and volunteers much easier, and personal, to your class.
- We suggest reviewing a few key terms the staff and volunteers may use during the tour and art project. A separate PDF will be provided to help teachers review with their class.
- The Museum is able to accommodate many accessibility needs. We just ask you inform the Museum of concerns prior to your visit so we are able to plan ahead to make your tour as smooth as possible.
- The chaperone to student ratio is 1:10. Up to 10 adults are included. A fee will be applied for each additional adult. Chaperons are expected to always stay with the group and ensure student compliance with Museum policies. Please keep in mind that we do not consider one-on-one aid as a chaperone for a larger group as their responsibility is to their assigned child.
- Due to space limitations in our galleries and studio we have large groups split up into smaller groups. We suggest each classroom have a plan for splitting their class in half and maintaining the proper chaperone ratio.

We rely on the cooperation of teachers and chaperones to maintain appropriate behavior and keep students together during your Museum experience. Please make sure that all adults accompanying your group are aware of their responsibilities. Thank you for observing these rules to help keep our Museum safe for everyone!

**Enjoy your visit!**





## OTHER POLICIES

### CANCELLATION & CHANGE POLICY

- 48 hours' notice is required for cancellations or schedule changes. We are glad to reschedule your program for a later date.
- In the case of inclement weather or school closures, we will contact you to reschedule.

### PAYMENT

- Payment is required on the day of your visit. The Museum accepts cash, checks, Mastercard, and Visa.
- We understand some school districts' payment policy does not accommodate payment prior to services rendered. *Please inform the Learning & Engagement Department of any specific procedures to streamline the payment process.*

### LUNCH FACILITIES

- Groups may use the Museum auditorium for up to 30-minutes for a lunch OR the picnic areas on the grounds.
- Two weeks' notice is required for use of the auditorium and please note that all food, beverages, and dishware must be provided by the group/school.
- Please note all food/drink must be brought in by the visiting group.

## ACCESSIBILITY

- The Lyman Allyn welcomes visitors and groups of all abilities. The Museum is accessible to wheelchair users via the ramp at the side entrance. All public galleries are accessible to visitors in wheelchairs.
- To better prepare our educators for your students and to best facilitate the learning process, please list any special needs that we should be aware of.
- A limited number of sensory bags are available for visitors to use during the duration of their visit. Please contact the Learning & Engagement team for more information.

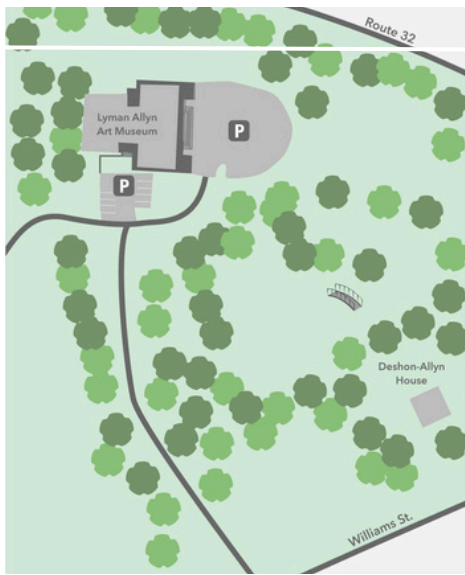
## PHOTOGRAPHY

- Taking photographs of your experience is encouraged for school staff and chaperones. Feel free to bring a camera with you. Student permission to take pictures will be at the discretion of the staff or volunteer leader.
- Groups are provided with photo releases prior to their arrival. If a student is not allowed to be photographed, please point them out to staff and tour leaders at the start of your visit.
- Please note no flash photography is allowed.



## ARRIVAL & DEPARTURE

- Lyman Allyn Art Museum is located at 625 Williams Street in New London, CT, about three miles north of the downtown historic waterfront district.
- All vehicles approach the Museum from the side. When entering and exiting please use the main entrance, which faces south. If a member of your group needs the accessible entrance, please inform Museum staff.
- Please arrive 15 minutes before your scheduled program to allow time for restroom use and check in. Upon arrival, please check in with the front desk. If you are running late, please contact the Museum at 860.443.2545.
- To ensure your group makes the most of their visit, please let Museum staff know when your group must be back on the bus. This helps us work backwards to maximize your time onsite.



## PARKING

- Free onsite parking is available for all visitors, located in front of the Museum. Accessible parking is available at the Museum's side entrance.
- We ask large buses staying for the duration of the tour either park at the bottom of Connecticut College Lot 3 just north of the Lyman Allyn grounds OR back up and park facing the Museum to allow for easier exit and allow other visitors to park accordingly.



## SHARE YOUR EXPERIENCE

- If your group took photos and are willing to share, please email them to [gipstein@lymanallyn.org](mailto:gipstein@lymanallyn.org). We use these images to help promote our programs and in fundraising efforts to keep our tour costs affordable.
- Share your experience with coworkers, friends and family! Our goal is for group tour participants to return and become regular visitors.
- We hope you all had a wonderful visit, but we are always open to improving our group experiences. If you have any comments that would feel would improve your tour, please let us know.





## MUSEUM HISTORY

The Lyman Allyn Art Museum was founded in 1926 at the bequest of Harriet Upson Allyn (1840 -1926). She was a life-long New London resident and the youngest of Captain Lyman Allyn's (1797- 1874) six children. She named the Museum in memory of her father, a man who commanded a whaling boat by the age of twenty-one and who later became a director of a banking company, an insurance company and a railroad company.

In 1910 Harriet Allyn had requested, in her will, that the Connecticut Trust and Safe Deposit Company of Hartford use money from her estate to create a park and a museum.

Allyn's death in 1926 established the beginning of the Museum. Architect Charles A. Platt was hired "to design an elegant neoclassical granite structure on a hill overlooking New London and the Thames River" using a design similar to the one Platt created for the Addison Gallery of American Art at Phillips Academy in Andover, Massachusetts. The Museum opened in 1932, displaying a modest collection built by the first Director, Winslow Ames.

Today, the permanent collection consists of over 18,000 paintings, drawings, prints, sculptures, furniture and decorative arts, with an emphasis on American paintings and decorative arts from the 18th through 20th centuries.



## DESHON-ALLYN HOUSE

In 1829, Daniel Deshon built the granite residence for his wife Fanny Thurston. Unfortunately, it was not long after the house was finished that Fanny passed away in 1833. Soon after her death, Daniel began to reside in Hartford, losing interest in the home and advertising it for sale in the Gazette as early as the following year.

Eventually the property would be purchased by Lyman Allyn in 1851. Allyn was born just north of New London in Montville on April 25, 1797. Although his family would relocate to Springfield, Massachusetts, Allyn returned to Montville by the time he was twenty-one. He began to serve as a regular sailor serving under Captain Daniel Deshon and later as Captain for whaling vessels under the ownership of N. & W.W. Billings.

Currently the DA House is used as additional object storage and is used by another organization as office space.

## PERMANENT EXHIBITIONS

The Lyman Allyn has three permanent exhibitions, one on each floor of the Museum. The objects in these exhibitions primarily remain unchanged, with objects only being rotated out for conservation or loan purposes.



Focused on our youngest visitors, ages 3-10, ***Playthings of the Past*** features toys, dolls, and other kinds of material culture of childhood from the Lyman Allyn's permanent collection. The core collection grew out of a substantial gift in the 1960s from toy collector Lydia Baratz, who had assembled an impressive collection over a period of 40 years. Many pieces in the Baratz Collection and in subsequent donations are European or American dolls and toys from the 19th and early 20th century



***American Perspectives*** celebrates the arts of America from colonial times through the 20th century, often through the lens of Connecticut and specifically New London County. Exploring fine and decorative art through three centuries, American Perspectives highlights some of the Lyman Allyn's finest works and most intriguing stories, bringing focus to the unique character of the region and its place in the wider world.



***Tiffany in New London*** explores the life and career of artist, designer, and glassmaker Louis Comfort Tiffany through the lens of New London, focusing on the artist's unique connections to the region. This Gilded Age permanent collection gallery includes stained-glass windows, lamps, favrile glass vessels, silver, jewelry, paintings, archival photographs, and other objects, many of which come from Tiffany family descendants.

## TEMPORARY EXHIBITIONS

In addition to our permanent exhibitions, the Museum has seven galleries spaces used for temporary exhibitions. A list of all current and upcoming exhibitions may be found on our website and may impact when your groups decides to visit.



**Glassenberg Gallery** is located on the first floor, just off our lobby, and is home to our Near :: New series. These exhibitions feature local and more contemporary artists. Exhibitions on view in this space are open for anywhere between eight to eleven weeks.



A majority of our temporary exhibitions are on view in our **second floor galleries**. These six gallery spaces are used to show two different temporary exhibitions. The exhibitions on view within these spaces are on view for a longer period of time, typically about three months. Our exhibition schedule has been carefully planned to ensure that the closing of each exhibition is staggered to ensure no more than three of these galleries are closed at one time.



The **Museum grounds** house our outdoor sculpture trail, a combination of Museum owned works and those on long term loan by the artist. We recommend group tours interested in the sculpture trail plan their visit in the fall and spring when the weather may be more cooperative.

## LEARNING RESOURCES

The Lyman Allyn offers learning resources in a variety of topics for students of all ages. They include:

- Curriculum based social studies and art lessons
- Art projects
- STEAM experiments
- Book of the Month activities
- Printable coloring pages

The full list of learning resources can be found at [lymanallyn.org/learning-resources/](http://lymanallyn.org/learning-resources/). In addition, a portion of the Museum's collection may be searched online at [lymanallyn.pastperfectonline.com/](http://lymanallyn.pastperfectonline.com/).



Frederick L. Allen, View of New London from Fort Trumbull, 1850-1859, oil on canvas.



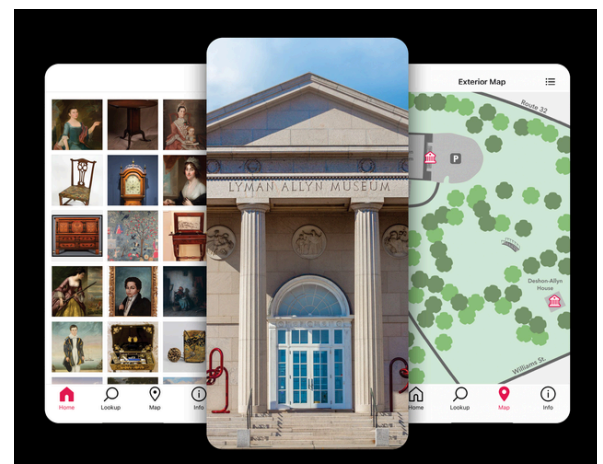
## YELLOW BUS FUND

With support of the Yellow Bus Fund, we are able to provide subsidies for schools throughout the state. Enquire about funding when registering for your visit.

- New London Public Schools receive a full subsidy for their programs.
- Schools in New London County may apply for a 50% bus subsidy for their transportation.
- All other schools in CT may apply for a 25% bus subsidy.

## MUSEUM IN YOUR POCKET

Use our digital/mobile guide on Bloomberg Connects, the free arts and culture app to easily access helpful insights on site during your visit. The Bloomberg Connects app, available for download from Google Play or the App Store, makes the Lyman Allyn accessible for either onsite or offsite visits through photo, audio and video features offering insights into your favorite works of art, permanent and changing exhibitions, and educational resources.



**Thank you to our Learning & Engagement supporters!**



**YELLOW BUS FUND**



**cThumanities**



**charterUP**

Lyman Allyn Art Museum Yellow Bus Fund, City of New London- Community Development Block Grant, Walmart Foundation, Bank of America-Bodenwein Public Benevolent Foundation, Connecticut Humanities, Chelsea Groton Bank, Community Foundation of Eastern Connecticut, Charter Up