

FOR IMMEDIATE RELEASE

September 24, 2024

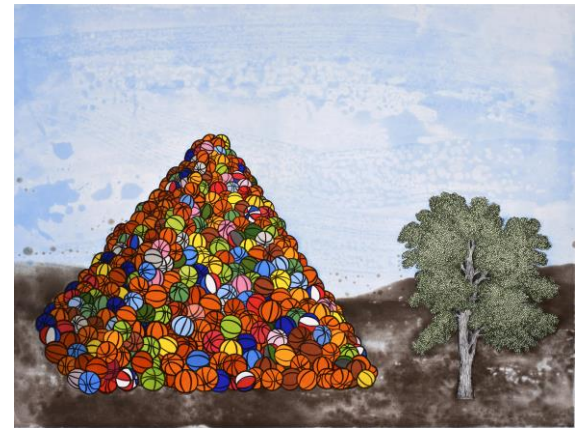
Lyman Allyn Art Museum

Press Contact: Rebecca Dawson, Director of Communications

860.443.2545 x2112 / dawson@lymanallyn.org

LYMAN ALLYN EXHIBITION FEATURES WORKS BY AFRICAN AMERICAN ARTISTS FROM ACROSS THE COUNTRY

New London – There is no singular way to address the conversation of race and representation in contemporary art. *Personal to Political: Celebrating the African American Artists of Paulson Fontaine Press* presents the unique vision and personal narratives of African American artists from across the country. Channeling the poetics of the human experience, this exhibition reflects on history, identity, personal stories, and spiritual inspiration. With 46 fine art prints by 17 different artists and a large-scale basketball pyramid installation by Berkeley artist David Huffman, this exhibition presents a powerful array of figurative and abstract art. It is on view Oct. 13, 2024 – Jan. 5, 2025.



David Huffman (American, b. 1963) *Basketball Pyramid*, 2007, color aquatint, spit bite, sugar lift, soft ground, and hard ground etching, 37 ½" x 45".

Personal to Political highlights the work of African American artists who are reshaping the world of contemporary art. Included are works by Martin Puryear, known globally for his elegant abstract sculptural forms; San Francisco Bay Area artist Lava Thomas, who considers themes of social justice and female subjectivity; and Lonnie Holley, a self-taught artist and prodigious mixed-media master; as well as art by Kerry James Marshall, Gary Simmons, and Radcliffe Bailey. Abstract quilts by Alabama's celebrated Gee's Bend quilters, including Loretta and Essie Pettway and Louisiana and Mary Lee Bendolph, have been adapted into prints, creating dynamic graphic art from the group's work in traditional textiles.

The fine art prints in this exhibition were produced at Paulson Fontaine Press in Berkeley, California, an artistic hub known for amplifying important, often underrepresented, voices in the visual arts. In 1997, after hearing the painter Kerry James Marshall speak of the need for more Black voices and artwork in museums and art institutions, press co-founder Pam Paulson realized there was work to be done. For over 25 years, Paulson Fontaine Press has worked with a diverse group of artists, collaborating and experimenting with different processes and materials to bring new art and artists to a wider range of audiences.

Collectively, the artists in *Personal to Political* confront the personal and public significance of past and current events while working in a variety of media. The artists have taken aesthetic action in making this work, and it reminds us that we can all take action. Artists featured in the exhibition are as follows: Edgar Arceneaux, Radcliffe Bailey, McArthur Binion, Woody De

Othello, Gee's Bend Quilters (Louisiana Bendolph, Mary Lee Bendolph, Loretta Bennett, Essie Bendolph Pettway, Loretta Pettway), Lonnie Holley, David Huffman, Samuel Levi Jones, Kerry James Marshall, Martin Puryear, William Scott, Gary Simmons, and Lava Thomas.

The opening reception is Friday, Oct. 18, from 5 - 7 p.m. Museum members are free, and non-members are \$10. To register, call 860.443.2545 ext. 2129 or email us at info@lymanallyn.org.

Related programming includes a Gallery Talk with Lyman Allyn curator Tanya Pohrt on Wednesday, Nov. 13 at 5:30 pm. Members are \$10, and non-members are \$15. More information will be available on lymanallyn.org.

Personal to Political: Celebrating the African American Artists of Paulson Fontaine Press was organized by Bedford Gallery at the Leshar Center for the Arts, Walnut Creek, CA. This exhibition has been made possible with support from an anonymous foundation. Funding has also been provided by the Connecticut State Legislature, and is administered by the Department of Economic and Community Development, Office of the Arts.

For more information or to request images, please contact Rebecca Dawson by email at dawson@lymanallyn.org.



About Lyman Allyn Art Museum

Lyman Allyn Art Museum welcomes visitors from New London, southeastern Connecticut and all over the world. Established in 1926 with a gift from Harriet Allyn in memory of her seafaring father, the Museum opened the doors of its beautiful neoclassical building surrounded by 12 acres of green space in 1932. Today it presents several changing exhibitions each year and houses a fascinating collection of over 19,000 objects from ancient times to the present, including art from Africa, Asia, the Americas and Europe, with particularly strong collections of American paintings, decorative arts and Victorian toys and doll houses.

The museum is located at 625 Williams Street, New London, Connecticut, exit 83 off I-95. It is open **Tuesday through Saturday, 10 a.m. - 5 p.m. and Sundays 1 - 5 p.m.**, and closed on Mondays and major holidays. For more information call 860.443.2545, ext. 2129 or visit www.lymanallyn.org.